



Wesley Methodist Church Weeke

# Wesley Somborne Link

## One Church on two sites

9th January 2026



King's Somborne Methodist Church

### Why should we celebrate Epiphany?

So, for me that's it all wrapped up for another year. Epiphany has passed and Christmas is back in a box (or rather several boxes) until next year. You are probably the same or are you perhaps one of the few who still hold out until Candlemas? For the world, Christmas is over and done. Even in the Church, following Epiphany, the revealing of Jesus to the Wise Men, we have returned to "Ordinary Time" while we wait for the start of Lent. For Methodists, this is also our Covenant season and as we renew our covenant, even the marking of Epiphany may have been missed.

So, we may ask ourselves, Christ has been revealed; what next? The answer to this lies in the fact that it is the wrong question to be asking! If we follow the lectionary, on Sunday, John the Baptist reveals Jesus in Jesus' own baptism. The following week, John reveals Jesus to his own followers and Simon and Andrew become Jesus' first disciples. The following week, Jesus reveals himself as he proclaims the Good News throughout Galilee.

To ask what next is to suggest that the revelation of Jesus Christ ends with Epiphany but Epiphany does not mark the end of the revelation of Jesus as the Messiah and Son of God; it marks the beginning of it. Together, the whole of the Gospels form the revelation of Jesus to the world. Epiphany does not end with Lent or Easter. It does not even end with the Gospels; following the Day of Pentecost when the Holy Spirit descends upon the Apostles, they take up their call to continue to reveal Jesus to the people of Israel and to the gentiles.

Every year, we mark Jesus' birth and his death much as we would for anyone we know and love. Of course, we also mark his resurrection since this is essential to our faith. But why should we mark Epiphany every year? The answer is simply because the revelation of Jesus Christ is still on-going. The mission Jesus gave to his Church is not yet complete. While there remain people who have not encountered Jesus in their own lives, the need for Epiphany remains. For how can people know him if he has not been revealed to them? The covenant we renew each year is a covenant to be a part of this continuing Epiphany.

Last year, we lost the renowned theologian, Walter Brueggemann. I end with a prayer he wrote on Epiphany:

On Epiphany day,  
we are still the people walking.  
We are still people in the dark,  
and the darkness looms large around us,  
beset as we are by fear, anxiety, brutality, violence, loss —  
a dozen alienations that we cannot manage.  
We are — we could be — people of your light.  
So we pray for the light of your glorious presence  
as we wait for your appearing;  
we pray for the light of your wondrous grace  
as we exhaust our coping capacity;  
we pray for your gift of newness that  
will override our weariness;  
we pray that we may see and know and hear and trust  
in your good rule.  
That we may have energy, courage, and freedom to enact  
your rule through the demands of this day.  
We submit our day to you and to your rule, with deep joy and high hope.

Blessings

Peter

On Sunday 11th January at 10.30am, the Service will be led by Mr Tom Belshaw and Mr La Follette

On Sunday 18th January the Service will be at 10.30am and this will be a Pulpit Exchange will be a Pulpit Exchange

These services will be live streamed, the link to which can be found via the Wesley Website at:

[www.wesleychurch.org.uk](http://www.wesleychurch.org.uk)

**Dates for Your Diary:**

**8th January: Together Thursday 2.30—4.30pm**

**11th January: Service led by Mr Tom Belshaw and Mr Andrew La Follette at Wesley 10.30am**

**11th January: Service led by Mr Stewart MacLachlan at King's Somborne 10.30am**

**12th January: Circuit Children, Youth and Family Leaders Zoom 7.00—8.00pm**

**12th January: Church Council at Wesley 7.30pm**

**15th January: Mini-Marvels (9.00—11.00am)**

**16th January: Friday Fun Club (5.00-6.30pm)**

**16th January: Feel Good Friday (7.00-9.00pm)**

**18th January: Pulpit Exchange at Wesley at 10.30am**

**18th January: Messy Church at King's Somborne (3.00-5.00pm)**

**22nd January 2026: Mini-Marvels (9.00—11.00am)**

**22nd January: Together Thursday 2.30—4.30pm**

**24th January: Café Wesley (10.00—12 noon) in aid of Youth@Wesley and Lego Church (10.00-11.30am)**

**25th January: ReFresh Service led by Mrs Pat Fry and Mr Andrew La Follette at Wesley 10.30am**

**25th January: Covenant Service led by Revd Peter Rayson at King's Somborne 10.30am**

**29th January: Mini-Marvels (9.00—11.00am)**

**1st February: Service led by Mr Nick Langham and the Worship Leaders at Wesley 10.30am**

**1st February: Service led by Revd Robert Kitching at King's Somborne 10.30am**

**Hot off the Press!**

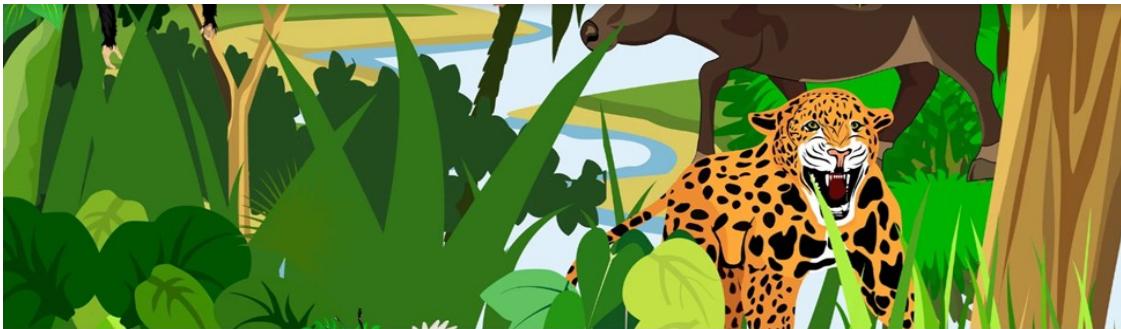
**The Youth@Wesley Team are delighted to be presenting a one-day Holiday Club extravaganza, during Half-Term on Wednesday 18th February 9.00am-4.00pm**

**Wesley Wild World is open to children in Y1—Y6**

**Tickets will be available through Eventbrite—see link below:**

<https://www.eventbrite.co.uk/e/wesley-wild-world-holiday-club-tickets-1979974400732?aff=oddtcreator>

**More details to follow in the next WSL!**



**Please support our invaluable Flower Ministry by signing the new rota for 2026, in the Foyer, to give offers of help. For further details please see Janet Cunningham. Many thanks!**



**The next edition of the WSL will be on Friday 23rd January, we will need any items for inclusion to be sent to Paul and Brenda, by Wednesday 21st January, 2026.**

**Email: [brenda.yarrien@btinternet.com](mailto:brenda.yarrien@btinternet.com) or by phone on 01794389153.**

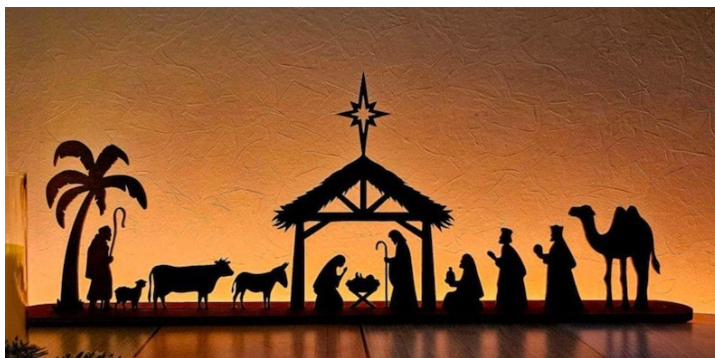
## Christmas 2025

Thank you for your Christmas Cards which were on display in the Foyer.

Your kind donations will enable us to give a £75 donation to

BEACON

Night Shelter



Please remember to continue to collect you stamps in aid of Naomi House



## Eco Tips to keep warm

### Winter Wellness: Keeping Yourself Warm



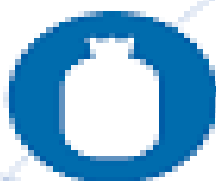
Keep Moving

Eat Well to Stay Warm



Wrap Up Warm

Priorities Heating Key Areas



Use a Hot Water Bottle

We have received this email from CTiW:

Kirsty Robinson

Secretary and Communications Co-ordinator

Churches Together in Winchester

[www.ctwin.org.uk](http://www.ctwin.org.uk)

Hello all

Anyone who wants to connect with others about how our churches can live out creation care and issues of climate justice is welcome to a gathering with others on:

**January 14th 2026 2pm at Christ Church, Winchester**

Over a coffee we'll share activities and plans that are happening in our own churches and discuss ideas for shared work in 2026.

This is for anyone who is interested, whether or not you've been before, whether or not you lead climate action work in your church or not.....so please spread the word, but do let me know if you plan to come so we can make sure there are enough biscuits and tea :)

In the meantime Happy New Year!

Jo

If you have any queries, please contact Jo directly on [jo@thecrocker.net](mailto:jo@thecrocker.net)



**The Environment and Climate Change**

**The Methodist Church has set an aspirational target of becoming a net zero carbon emissions Church by 2030.**



## *A Prayer for the New Year*

Lord, come gently into this new year.

Warm what is cold,

Strengthen what is fragile

Help us move with courage and kindness.

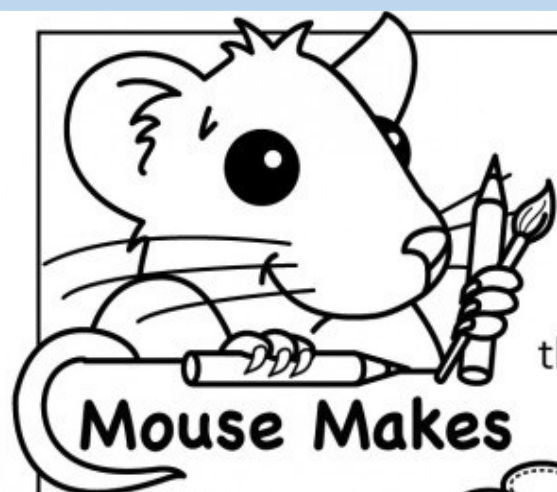
Carry us through, day by day,  
in Your love.

~ MINDFULCHRISTIANITY

I am with you always.

Matthew 28:20





**EPIPHANY** is the time in the Church year that we remember when the 'wise men' or 'Magi' followed a star that led them to the Christ child Jesus. They bowed down and worshiped him and left *three* special gifts:



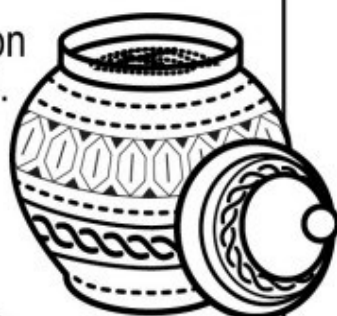
**GOLD**  
A valuable metal. Reminds us that Jesus is **King of Kings**.



**FRANKINCENSE**  
A sweet smelling incense used in the Temple to worship God. Reminds us that **Jesus is God**.



**MYRRH**  
A fragrant spice put on a body before burial. Reminds us that Jesus was to die so that he could be our **Saviour**.



Can you find these words below in the word search?



How did God warn the wise men?



**READ**  
**Matthew**  
**2:1-12**

G D  
K I N G

E	S	B	P	R	I	E	S	T	S	J	B	J	B	P	B
F	H	O	M	B	O	I	S	R	A	E	L	E	E	R	O
I	E	W	Y	R	W	A	W	C	H	R	I	S	T	O	R
N	P	E	R	J	A	J	O	Y	F	U	L	U	H	P	N
D	H	D	R	U	R	L	R	W	I	S	E	S	L	H	N
E	G	H	D	N	O	S	S	T	A	R	A	E	E		
R	I	E	E	I	O	H	G	O	L	D	W	H	C		
D	F	R	A	N	K	I	N	C	E	N	C	E	Y		
O	T	O	S	G	O	P	H	B	M	L	E	M			
S	D	T	N	D	R	E	A	M	A	R	Y				

JESUS • BORN • BETHLEHEM • JUDEA • WISE • EAST • JERUSALEM • KING  
STAR • WORSHIP • HEROD • PRIESTS • CHRIST • PROPHECY • SHEPHERD  
ISRAEL • GO • FIND • LOOK • SAW • JOYFUL • MARY • BOWED • GIFTS  
GOLD • FRANKINCENSE • MYRRH • WARNING • DREAM